

Around Town The Emmaus Borough News

Old Fashioned Christmas



Thursday, December 4th

- Emmaus Holiday Mixer, 6–8 pm at the VFW, 316 Main Street. Storefront Decorating Contest winners will be announced.
- Historic Candlelight Tour, 6–8:30 pm. Take a step back in time as we tour the 1803 House, the Knauss Homestead, the Shelter House, the Emmaus Moravian Church, God’s Acre Cemetery and the Emmaus Historical Society & Visitors Museum. Trolley seating is limited to 30 passengers. \$15 adult, \$10 children under 12. Call 610-965-6279 to reserve seating.

Friday, December 5th

- Holiday Story Times at the Library, 10:30 am and again at 1:30 pm. Join Martha Vines, Children’s Librarian, as she dramatically narrates your favorite holiday stories.
- Downtown Merchant Open House, 5-8 pm at various downtown shops.
- Historic Candlelight Tour, (same as Dec 4th).
- “Ring & Sing into an Old Fashioned Christmas”, featuring the Heidelberg Concert Handbells and the Emmaus High School Singers, 8 pm at the VFW. Admission \$20. Call 610-965-6279 to purchase tickets.

Saturday, December 6th

- Holiday Story Times at the Library, (same as Dec 5th).
- Free Trolley Rides throughout downtown Emmaus and to each of the Historic Sites. 12–4 pm.
- Holiday Activities at the Historic Sites (1803 House, Shelter House, Knauss Homestead, Emmaus Historical Society), 12–4 pm.
- Wreath Decorating Contest, 12–3 pm on the Triangle. Judging at 2:45 pm. \$5 per wreath. Materials and supplies provided. Winners selected in four age categories.
- Pet Costume Contest, 1–1:30 pm at R Furry Friends, 325 S. 5th Street. No entry fee. Winners selected in three categories: Cat, Dog and Other.
- “Ring & Sing into an Old Fashioned Christmas”, featuring the Heidelberg Concert Handbells and the Emmaus High School Singers, 2 pm at the VFW. Admission \$20. Call Teri at 610-965-6279 to purchase tickets.



New Contest

· Christmas Hat Contest – NEW! – Bring your decorated Christmas Hat to the Triangle at 2 pm and enter the contest to win! No entry fee. Winners selected in four categories: Brightest, Loudest, Most Extreme and Bah Hum-Bug! Judging at 2:45 pm.

· Christmas Hat Parade – NEW! – Bring your decorated Christmas Hat to the Triangle at 5:30 pm to participate in the Christmas Hat Parade. Two winners (child and adult) will be awarded a “People’s Choice” award.

- Horse & Carriage Rides, 4–8 pm on Main Street. \$7 adult, \$3 child. Stops every 20-30 minutes in front of Iobst Travel, 328 Main Street.
- Tree Lighting Ceremony, 6 pm on the Triangle.
- Cocoa & Cookie Bar on the Triangle, 6 pm. Compliments of the Emmaus Kiwanis Club.
- Community Sing-Along, 6 pm on the Triangle. Featuring the choirs of local churches.
- Arrival of Santa & Mrs. Claus, 6:30 pm on the Triangle.

Inside this issue:

Tax Collector Info	2
Youth Sports	2&3
Arts Commission	3
Trash & Compost Information	4
2009 Anniversary	5
Garden Foundation	5
1803 House	5
Library News	6
Shops of Emmaus News	6
Crime Prevention	7
Emmaus Shade Tree Commission	7

Please note:

- ♦ **Corner Properties**—when clearing snow, please remember to clear a path from the sidewalk to the street for pedestrians.
- ♦ **Tax forms**—available at the Library, 11 E. Main St. and at Representative Reichley’s Office, 1245 Chestnut Street.

Read This! It May Save You Some \$\$\$\$

A message from Dennis Gouldy, Tax Collector



2008 is the first year that revenues generated by the new casinos are being used to reduce your school taxes. In the East Penn School District, each registered homestead or farmstead saw its taxes reduced by \$118.20. I expect this amount to grow as new casinos open. Residential properties that are not registered as a homestead will not benefit from a tax reduction; you must be registered to get the reduction. Registration is not automatic. You must take the initiative and register your homestead. Commercial, industrial, and investment real estate does not qualify.

Most of the homesteads in Emmaus are registered, but a surprising number are not. Here are some ways to know if you are registered. First, if you

received the tax reduction this year, you are registered. Your school tax bill will show the reduction as a line item. Second, you can look it up on the Lehigh County web site at www.lehighcounty.org. From the first page, click on Assessment Records, then follow the instructions to see the record of your property. If it is registered as a homestead, "Homestead Act 72" will be noted at the bottom of the Parcel Information section. If you don't have access to the internet, you can call me at 610-967-4598 and I'll look it up for you.

If your homestead is not registered, you must contact the County Assessment Office to register. It is located in the Lehigh County Government Center at 17 South 7th Street in Allentown, and you may call them at 610-782-3038.

Help Us Help You!

Do you see potholes, faded street signs, burned out street lights, low hanging branches, or items in the roadway?



Please contact the Public Works Department at 610-965-9288 to report any of these or other concerns so that we can maintain and improve the quality of life in Emmaus.

Youth Soccer this Spring in Emmaus

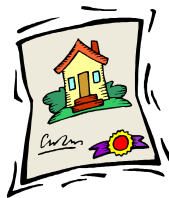
Western Lehigh United Soccer Club, the travel arm of Emmaus Youth Soccer, is pleased to announce a new Youth Soccer Program beginning in April 2009.

Registration will take place in January. Check out our web site, westernlehigh.org, for more information. You can email us at western.lehigh.united.soccer@rcn.com to be added to our mailing list.



Sewer Backups Stink!!!

All sanitary sewer systems, the ones that carry the waste from your house, are susceptible to backups as a result of the accumulation of debris or the introduction of inappropriate material into sewer lines by customers. The Borough performs routine inspections and flushing of its sewer mains to remove buildups that could affect sewer flows. However, on rare occasions, sewer mains will become clogged. The most recent incident occurred because a sewer customer somehow introduced heavy duty rags into the system. The first notice that anyone had of the clog was when a property owner, immediately upflow from the blockage created by the rags, suffered a backup of sewerage into the basement, causing damage to the property.



Be aware that homeowner's insurance policies may not provide coverage for sewer backups unless an extra premium is charged for that specific coverage. Because the Borough's insurer will not pay for a customer's property damage unless the Borough is legally liable for it, property owners should check with their insurance agent to determine if they have such coverage, and to discuss their insurance needs.

A sewer backup into a basement is not only disgusting and dangerous to property, it is a potential health hazard that needs to be remediated immediately. So, even though a backup is rare, because the effects are so serious, the Borough suggests that property owners review the issue with their insurance professional.

See. Hear. Feel Art!

The Emmaus Arts Commission is pleased to announce several 2009 events



The 3rd Annual SnowBlast Winter Festival is scheduled for Saturday, February 7 and Sunday, February 8, 2009. The Festival is packed with outdoor and indoor events at locations around Emmaus. Designed to be fun for children and adults, it encourages families to turn off their computers and TVs and head outside to play! Events include an ice sculpting competition, slippery tug-of-war, ice skating, sledding, Frostbite Fun Run, storytelling, horse and carriage rides, Iditarod trail sled dog demo, musicians, merrymaking and much more. Join us for the coolest winter celebration in the Valley! Stay tuned for the activity schedule and visit www.snowblastwinterfestival.org for more details.

Save The Dates!

- SnowBlast Blizzard Ball, Saturday, February 7, from 8-11 pm, Emmaus VFW.
- Emmaus Art In The Garden, in association with the Emmaus Garden Club, Saturday, June 20, 2009.
- Emmaus Arts Commission Wildlife Art Festival, in association with the Wildlands Conservancy, September 12, 2009.

Beautiful 2008 Emmaus Christmas Cards are available in locations around Emmaus. A pack of 10 cards costs \$12. Signed and numbered limited edition prints of the Christmas card scene are available at Bach & Company Art Gallery for \$25 each. This year's card and print theme is the 1803 House. A portion of the proceeds from the sale of the cards will benefit the Emmaus Arts Commission.

The Emmaus Arts Commission would like to increase the art experience for all members of the Emmaus Community and its surrounding areas. Please check our web site frequently for updated information at www.emmausarts.org. We welcome volunteers and participants. If you would like to be involved in any of our events or participate as a vendor, please contact us. Help us grow the arts in Emmaus!

Emmaus Youth Association

Helping our children grow through competition and teamwork

2009 spring baseball and softball signups will be held at St. John's Church at 5th and Chestnut Streets on Saturday, January 10, 2009 from 9 am to 2 pm and on Wednesday, January 14, 2009 from 6 pm to 8 pm. Please check for postings on the EYA's web site or signup to receive the EYA Newsletter.

Help us to keep EYA around for another 50 years. Our goal is to keep the EYA going as an important opportunity for our youth. We sponsor many youth sports as well as community activities throughout the Emmaus area and the East Penn School District.

To continue our success, we are asking for your help. We would like to have parents of young



children in the EYA program become EYA Board Members. Meetings are held once a month. This is your chance to carry on the many traditions that we have created. Many of our Board parents have children that have graduated and are no longer in the youth programs. Many young adults have decided to give back to the program by volunteering for your sons and daughters. Please consider volunteering a small amount of your time for EYA.

A huge thank you to all of 2008 volunteers, parents, coaches, and our youth for your help.

Visit our web site, www.eyanews.org, or contact EYA via voicemail at 610-965-7461 #8, for more information.

5th Annual Volunteer of the Year Award

Do you know someone you would like to nominate as the 2008 "Volunteer of the Year" for their EXTRA effort in making the Borough of Emmaus a better place to live, work, and play? Please send your nominee's name and a brief description of his or her volunteer efforts to: Borough Manager, 28 S. 4th St. Emmaus, PA 18049 or Mvasoli@aol.com (RE: Volunteer of the Year) by December 19, 2008. **Congratulations to Frank & Josephine Sadrovitz, winners of the 2007 "Volunteer of the Year" award.**

Christmas Tree Collection



Christmas tree collection will begin on Friday, December 26, 2008 and continue through Friday, January 16, 2009.

Place your tree at curbside, **WITHOUT A BAG**, and the Public Works Department will pick it up. Trees discarded after January 16th will not be picked up. After that, residents must take their tree to the compost site for disposal. See below for Compost Center dates and hours.

Compost & Leaf Pickup Info

From now until December 8th you can rake your leaves (NO GRASS) to the curb and the Public Works Department will pick them up.

The Compost Center is open until Dec. 8th.

Hours:

Mon, Tue, Thurs, Fri	7:30 am to 2:00 pm
Wednesdays	7:30 am until dark
Saturdays	8:00 am to 4:00 pm

Additional Compost Hours

January 19 to 23, 2009, 7:30 am to 2 pm.
Please take advantage of this time if you've missed the Christmas tree pickup or if you have leftover leaves or other debris from Fall.

Holiday Trash Collection

Thanksgiving Day, Nov. 27th, Christmas Day, Dec. 25th, and New Years Day, Jan. 1st— There will be no pickup for residents who put trash out on a Wednesday night for these Thursdays collections.

If a snow or ice emergency results in your recycling and/or refuse not being picked up, it will be picked up on your next scheduled day.

Snow and Ice Removal

Snow or ice must be removed from pavements or sidewalks within 24 hours after it stops snowing or after the accumulation of ice. A cleared pathway of at least 48 inches is required. Waiting to shovel your driveway until after the plows widened your street can save you from having to shovel out again.

If your property is located on a corner, please remember that it is your responsibility to clear a path from the sidewalk to the street. When clearing snow or ice, **do not throw it into the travel portion of the street.** It can be hazardous to motorists and Borough plows.



Adopt-A-Hydrant

Do you live near a fire hydrant? How would you like to adopt it this winter? The overwhelming response that we received last year saved the Fire Department time and energy in cleaning the snow away from over 350 hydrants in the Borough. If you have a hydrant in your neighborhood, please adopt it this winter by keeping it clear of snow so that it is readily accessible in case of an emergency. Your assistance will be greatly appreciated.



Safety Notice—Sanitary Sewer Inspections

The Emmaus Borough Public Works Department is continuing its sanitary sewer inspections. This ongoing project is to prevent rainwater from entering the sanitary sewer system and ultimately being transported and treated at the Allentown Sewage Treatment Plant. Rainwater is clean and we don't want to pay to have it cleaned at the plant.

For your safety, please do not allow anyone into your home unless you have received a letter from the Public Works Department asking you to call and schedule an appointment for an inspector to come to your home. A Borough inspector will arrive at the scheduled time, in an Emmaus Borough vehicle, and will have proper identification. **NO INSPECTOR WILL COME TO YOUR HOME WITHOUT AN APPOINTMENT.**

From the Commemorative Garden Foundation



called the Eagle Walkway and it allows visitors to enter the Garden directly from the parking lot without having to negotiate the grass strip in between. It is the Foundation's goal to invite past and future Eagle scouts to place remembrance bricks in the walkway. A special thanks to Bev Young of Paradise Landscape Design and Mike Groff of Naturalscapes for their invaluable assistance to this project.

We also want to thank the Catholic War Vets, the Lions, Rotary, and Kiwanis Clubs of Emmaus, and the Emmaus Garden Club for assuming site maintenance responsibilities that have kept the Garden looking exceptionally nice through the summer and into the fall. The Garden's great appearance is directly attributable to their efforts under the expert guidance of Jill Cramer.

We invite everyone to visit the Garden and/or our web site at www.emmausremembers.org or contact Mike Waddell at 610-967-5709 for more information.

John Thomas, an aspiring Eagle Scout candidate from Troop 431 in East Texas, worked hard this spring and summer to plan for a new walkway at the Remembrance Garden at the Knauss Homestead. His hard work paid off in October when he, other scouts, and some parents installed a beautiful new walkway complete with flowers, mulch, river rock and other plantings. The walkway will be

1803 House



The 1803 House, 55 S. Keystone Ave., will hold an Old Fashioned Christmas Open House on Saturday, Dec. 4, from 10 am to 2 pm. Children will be able to make a creative holiday card and storyteller Corrine Durdock will present a flannelboard telling of "Anna Eleanora's Special Day," 11 am and 1 pm. She will also be available to sign the book. Holiday gifts are available: books, notecards and prints. Members are needed to serve on the Friends of the 1803 House Board. For more information on purchasing gifts call 610-965-0152, or for information about the 1803 House, email: information@1803house.com.

Emmaus 2009 Anniversary News

If you are looking for some special stocking stuffers or memorable holiday gifts, the Emmaus 2009 Anniversary committee has gift ideas for you.



Emmaus 2009 Anniversary souvenirs will be available in time for the holidays. You can choose from key tags, license plates, a train ornament, ceramic trivets, magnets, coasters, lapel pins, a starburst glass mug, fleece stadium blankets, T-shirts, caps, tote bags and Longaberger baskets (one choice is a market basket with a lid with an etched anniversary logo).

Go to 2009emmaus.org to view the items and for ordering information. Displays will be available at Out of Our Hands, 244 Main St., the Emmaus Main

Street Program office (located behind Out of Our Hands) and the 2009 Anniversary office. For information call the EMSP, 610-965-6279.

The 2009 Anniversary office is located in the basement of Town Hall. Office hours are Wednesdays, 10 am to 1 pm and by appointment. You can call the staff, Johanna Green and Marge Heatley, at 610-966-7601 or email office@2009emmaus.org.

Looking ahead: In December 2009, the 2009 Anniversary Committee will be publishing a commemorative book that will include photos and highlights of the yearlong anniversary events. If you would like to purchase the book or sponsor space in it, please email or call Dr. Roger Whitcomb at rwhitc2558@aol.com or 610-217-2990.

Shops of Emmaus—Toast the Holidays Celebration

Join participating merchants in celebrating the Holidays. Shop locally and enjoy the festivities! Guess the height of the Christmas Tree - Win great prizes, like “Emmaus Money” or Shawnee Tickets for those that come the closest!

December 5th, 5 pm to 8 pm - Shop early and join participating merchants in a Progressive Wine and Cheese and enjoy Christmas Carolers.

December 12th, 5 pm to 8 pm - Book Signing Event - Join participating merchants that will host locally and nationally acclaimed authors. Visit our web site (www.ShopsOfEmmaus.com) for the visit-



ing authors and locations. Enjoy refreshments and Christmas Carolers.

December 19th, 5 pm to 8 pm - Welcome Santa back into Emmaus. He plans to visit with his parade of elves – and it’s just because he LOVES Emmaus so much!!! Free pictures with Santa. Enjoy refreshments. Santa will announce the winners of the “Guess the Christmas Tree Contest” too! (Rain date – December 20th at noon).

Other events and specials will be hosted at individual businesses. Be sure to check out our web site or pick up a flyer in town to see all the other great events going on at the Shops!

Emmaus Public Library News



Old-fashioned Christmas story times are scheduled for Friday, December 5th and Saturday, December 6th at 10:30 am and 1:30 pm. A craft event will be happening on Saturday from 10:00 am to 4:00 pm. The Friends of the Emmaus Public Library will hold a Christmas Book Sale on Friday evening December 5th from 6:30 to 9:00 pm at the Library. The sale will include a selection of gently used books, including Christmas and gift books.

Children in Kindergarten and First Grade are invited to be a part of Twilight Readers, starting Thursday evening, January 8th at 6:30 pm. Please call the library to register. Weekly story times for three and four year olds will continue on Wednesday and Friday mornings. A session for two year olds, accompanied by an adult, starts again on January 9th. Pre-registration is required.

There is a wealth of information to be found in the POWERLibrary, a series of online databases available to anyone with an Emmaus Public Library card. This set includes over 35 databases, with current full text periodical articles. You can find car repair information, wiring diagrams and recall bulletins for almost any automobile. Look at the AP Images database for photographs from today’s news and an archive that you can search by subject.

At the Library you will find a broad selection of current library books for adults and children, audio books, and musical CDs. Online, you can download books to an MP3 player or a video to your computer, all from your home computer!!! The database Ancestry.com is available without charge on all library computers.

“Books in memory/in honor of” is a special service offered by the Library, allowing a book to be placed in the library with a plate in the front of the book mentioning the honoree or the deceased. The Library staff works to find a book that is appropriate for the interest of the person. You are billed for the cost of the book and the person or the family is sent a card listing the title of the book. Memorial funds are often established to place books in the Library in lieu of flowers.

The Library continues to accept donations for the expansion fund. About one-third of the funding needed for the addition has been acquired. Construction could begin as early as mid-2009, but spring 2010 is most likely. Both the Library Board and Library staff are eager to see the project to its completion so that the Emmaus Public Library will be able to provide the best possible service to all Library users.

Call the Library (610-965-9284) with any questions. Come to the Library to find a book, browse through the stacks, or read a newspaper. Library hours are Monday through Thursday 10 am to 9 pm, Friday 10 am to 6 pm, and Saturday 10 am to 5 pm.

Crime Prevention Tips from the Emmaus Police Department

Exterior Doors



- Make sure all doors are locked at night and every time you leave the house, even if it's just for a few minutes. Doors should have a working, keyed entry lock and a sturdy deadbolt lock installed in the frame of the door.
- Doors should be solid hardwood or metal-clad with wide-angle peepholes at heights that everyone can use.
- Be sure that glass panels (in or near) an exterior door are reinforced in some way so that they cannot be shattered.
- Spare keys should be kept with a trusted neighbor, not under a doormat or planter, on a ledge, or in the mailbox.

Sliding Doors

- Be sure that sliding glass doors have a strong working key lock

and are locked every night and each time you leave the house.

- Use a dowel or a pin to secure a glass door to prevent the door from being shoved aside or lifted off the track.

Protecting Windows



- Make sure every window in the house has a working key lock or is securely pinned.
- Lock your windows at all times, even when they are opened a few inches for ventilation.

Garage Doors

- The door leading from an attached garage to the house should be solid wood or metal-clad and protected with a quality keyed door lock and deadbolt.
- Do not rely solely on the automatic door opener to provide security; an overhead garage door should have a lock.

- Garage doors should be locked when leaving the house.

In General



- Always report suspicious activities involving persons and vehicles to the police.
- When reporting incidents to the police, pay particular attention to the vehicle's license/registration numbers, color, and the physical characteristics of suspicious persons.
- Keep your business, residence and vehicles locked.
- Be alert for persons looking into parked cars and wandering through neighborhoods and business districts.
- Keep a light on after dark, or install a motion sensor light on your property.
- Request identification from any person who visits or solicits at your home.

Celebrate a birth...Commemorate a special event...Memorialize a family member, friend or mentor. The Emmaus Shade Tree Commission invites you to honor the important people or events in your life by purchasing a memorial tree. Investment will be between \$130 and \$230 and the Shade Tree Commission will assist with species selection. Trees will be planted by the Borough at a public area within the Borough. For more information, please contact Karen Poshefko at 610-965-5086.

...Did you know

The Emmaus Shade Tree Ordinance contains regulations pertaining to trees planted within the public right-of-way (approximately 12 ft. from a street). Property owners must notify & receive a permit from the Shade Tree Commission **prior** to pruning, planting or removing these trees. **"Topping"** is also **prohibited**. For questions regarding street trees, please contact any Shade Tree Commission Member: Reds Bailey, 966-4044; Shawn Huzar, 965-9706; Karen Poshefko, 965-5086; and Linda Destan, 965-8270.

Must love trees....

The Shade Tree Commission is looking for a new team member. The ideal candidate will have some or all of the following:

- **A** commitment to participate in meetings and activities
- **A** genuine appreciation for trees
- **B**ackground in landscape design and/or tree maintenance
- **A**ccess to e-mail

Please contact Karen Poshefko at 610-965-5086.



...Plant-A-Tree Campaign

Let's come together as a Community... Get Involved...and do our part to support the efforts to beautify Money Magazines 2007 Top 100 Best Places to Live! WE NEED YOUR HELP! Learn more about the program, and have your neighborhood professionally assessed for tree types and locations for FREE! Discount tree pricing available for interested parties. Learn more by calling Shawn Huzar at 610-965-9706

Borough of Emmaus

28 South Fourth Street
Emmaus, PA 18049



**A Community United for
Progress**

We're on the web!
www.borough.emmaus.pa.us

PRSR STD
U.S. Postage
PAID
Emmaus, PA
Permit No. 198

ECRWSS
Postal Customer
Emmaus, PA 18049

Mayor

Winfield Iobst

Council

Michael Waddell, President
Craig Neely, Vice-President
Brent Labenberg
Lee Ann Gilbert
Wesley Barrett
Brian Holtzhafer
Nathan Brown

Emmaus Ambulance Corps 2009 Subscription

If you **HAVE NOT** received the 2009 Subscription brochure, please call the Ambulance Corps at 610-967-5615 to have one mailed to you as soon as possible. Subscribers receive substantial savings on Emergency and Non-emergency services. Unexpected medical emergencies can strike anyone, anytime, anywhere. Please read the brochure carefully, as we have made some changes. Don't hesitate to call our office if you need assistance or if you have questions. Our office staff will be happy to assist you. Payment must be received before February 28, 2009. The single rate is \$35.00 and the family rate is \$45.00. We are now accepting Visa and MasterCard payments. **JOIN NOW!** If you miss the deadline, there will be a \$5.00 additional charge. Thank you for your continued support of the Emmaus Ambulance Corps. Check out the Corps on the Borough web site under "Departments."

Borough Contact Information

Town Hall Main	610-965-9292
Water/Sewer Billing	610-965-9231
Zoning	610-967-1322
Public Works	610-965-9288
Tax Collector	610-967-4598
Ambulance Office	610-967-5615
Fire Dept. Office	610-967-5630
Police Dept. Office	610-965-0722
Police Dept. (non-emergency)	610-967-3113

Emergencies 911



Please be sure to check out the extended pavilion and new bathrooms at BoroLine Park!